



# Automated Tracking Solutions For Highway Construction and Equipment Rental Services



## Monitor Jobsite Performance Remotely

- Reduce engine idle time to save fuel
- Estimate costs more accurately by reviewing actual usage on job
- Track jobsite equipment on DOT engineering drawing maps
- Monitor engine hours to schedule fuel trucks

## Safeguard Equipment on the Job or in the Yard

- Get automated tracking that locates equipment 24/7
- Receive an alert via phone or email when equipment moves
- Locate stolen equipment



## Get Reports that Help You Manage Your Business

- Understand what equipment is idle at jobsite and why
- Identify need for preventive maintenance to reduce breakdowns
- Improve your project management with reports that detail actual usage on job
- Enhance your estimating capabilities by reviewing job detail and summary reports

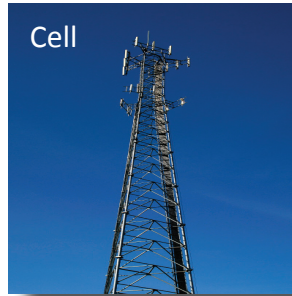
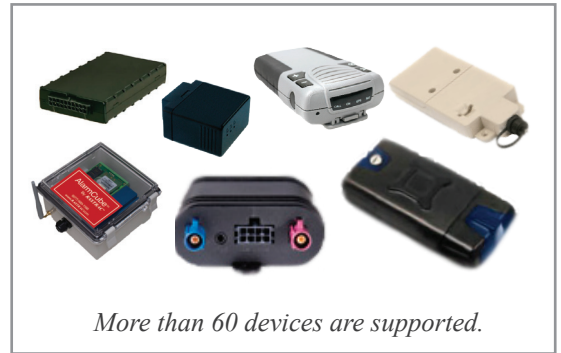
“Every time we have called in with a question or just for some general knowledge about GPS you have gone above and beyond. We really want to thank your whole crew. We definitely recommend your company to anyone who is even thinking about using a tracking device for their equipment.”

Kris Rodgers  
Rental Manager  
Texana Machinery

**RASTRAC**<sup>®</sup>

## RASTRAC is Designed to Meet Your Needs

- Choose from 60 different tracking devices or others as they are developed
- Select communications by radio, satellite, cellular, or GPRS
- Access a large variety of reports
- Set alerts and determine who will get alerted, and how



## Go with a Proven Leader

- Get ongoing access to upgrades that contain new features and updates to ensure compatibility with the newest computer hardware and communication systems
- Get support from an established innovator in tracking systems, backed by more than 15 years and the tracking of 250,000 assets in over 60 countries

**RASTRAC® Vehicles & Locations**

Navigation: Vehicles & Locations | My Settings | Help | Sign Out

Tracking | Address Lookup | Reports

**Vehicles & Locations**

- ISC080902
- ISC080903
- ISC080904
- ISC080905
- Unit 2
- Unit 3
- Unit 4
- Unit 5

**Map Type**

- Find Vehicle/Location
- Today's Track
- Yesterday's Track
- Select track

**Zoom**

- 2 kilometers wide
- 5 kilometers wide
- 20 kilometers wide
- 50 kilometers wide
- 200 kilometers wide
- 500 kilometers wide

**Map Size**

- None
- Small
- Medium
- Large

**Communication**

Show Me! | Get Vehicle Position

**Map Data:**

- EDWARDS-KORE-5927
- Florida Native
- 435
- TRAILL
- HAMPTON VAN
- 441
- 408
- 552
- Winter Park
- Belle Isle
- Austin Tindall Park
- St Cloud
- HAMPTON F-150

**Vehicle Details:**

- HAMPTON F-150
- Feb. 01, 2010 at 10:15:43 AM
- 2086 Keel Way, Kissimmee, FL, 34744
- Received: Feb. 01, 2010 10:15:43 AM
- Event: Ignition Off
- Inputs: Ignition OFF
- Odometer: 47319.49 miles
- Satellites: 7
- GPS: GPS

\* Tracks and multi-vehicle



Member

Special Discounts for AGC Members

# RASTRAC®

Solutions for every tracking need.

www.rastrac.com  
(877) 680-1188