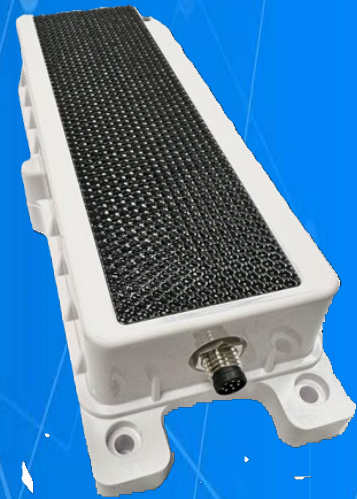


# BeWired+ Solar

BeWired+ is a complete end to end solar/externally powered tracking solution. Utilizing the latest in LTE-M/NB Cellular technology, the BeWired+ device has very low power consumption and long battery life, allowing you to track, monitor, and manage a wide variety of durable and perishable assets like never before.

BeWired+ is designed as a solution to help increase your productivity, ROI, and visibility.



## Key Features

- LTE CAT M1 / CAT NB1/NB2 / 2G Communication
- Off-the-shelf deployment with near real-time tracking
- Motion tracking, triggering updates
- IP67 rugged and dust/ waterproof enclosure
- Can monitor temperature, humidity, pressure, light, and motion
- Ultra-low power platform
- Maintenance free, Rechargeable long battery life (10+ years with higher resolution update rates),
- Full coverage (deep indoor and rural areas)
- Easy to install

## Technical Specifications

### Physical

Dimensions: 152 x 64 x 40 mm  
Weight: 0.8 lb

### Environmental

Temperature: -20° to +60° C  
Humidity: 95%RH @ 50° C  
Vibration and Shock: non-condensing MIL STD 810G  
Ingress Protection: IP67

### Sensor Operation Range

Input Power: 6.5V - 24V input range  
Ignition Sense: 0 - 40V input range; 7.5 higher Ignition ON  
Onewire: Up to 4 Onewire temperature probes connected in parallel  
Environmental: Temperature [ 40 , +85; Absolute accuracy 0.5 C ]  
[ Absolute accuracy 3 % RH ]  
[ 300...1100 hPa , Absolute accuracy 1 hPa]  
Motion: 3-Axis Accelerometer



[www.rastrac.com](http://www.rastrac.com)

[sales@rastrac.com](mailto:sales@rastrac.com)

(877) 680-1188

©2024 Manning NavComp, Inc. All rights reserved. Rastrac is a registered trademark of Manning NavComp, Inc. All other trademarks are the property of their respective owners. The BeWired is a product of BeWhere, Inc..